



Port of
Sydney
CANADA

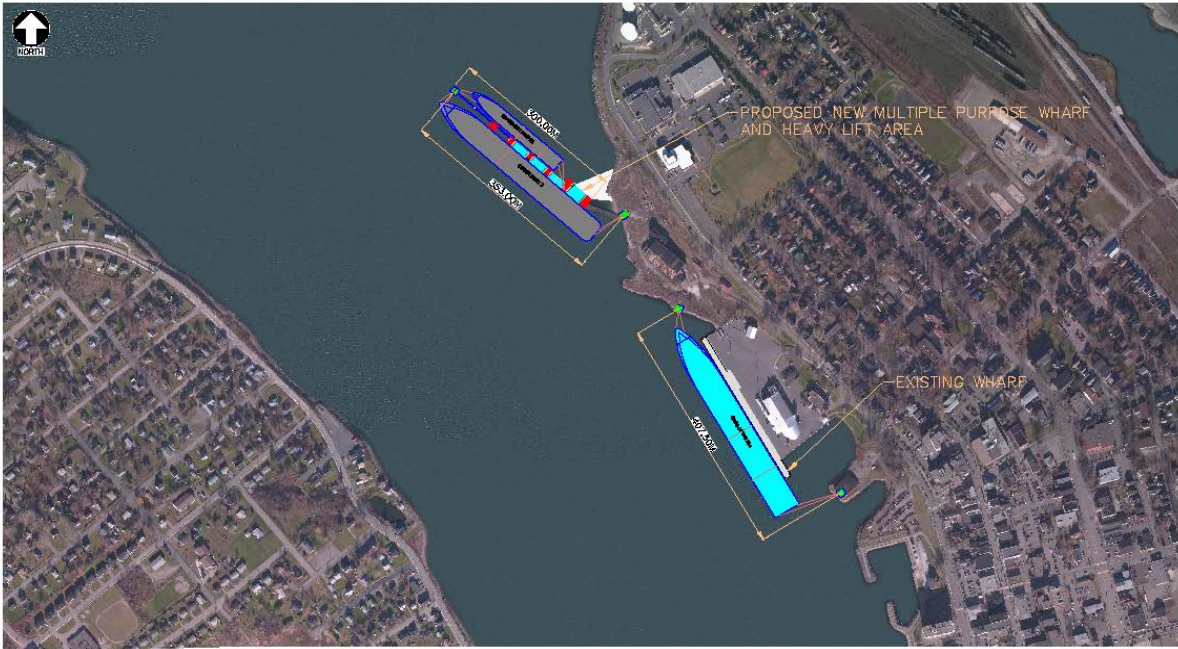
MOVING FORWARD WITH THE SECOND BERTH

- Construction of a new 2 Face Cruise Ship Berthing Wharf, capable of safely docking cruise ships or other commercial vessels 300 meters or longer.
- The project includes the acquisition of land and water lots, and capital improvements to the existing wharf.

- Total budget estimated at \$20 M
- The CBRM has approved in their capital budget \$6,666,667.
- Both the Provincial and Federal Government (ACOA) are currently reviewing the second berth request for funding

- A second berth will have a broad impact on the economy beyond cruise
- Estimated business loss over the past 2 years estimated at \$500,000 not including spin off activity (with no marketing efforts)
- Military vessels, Coast Guard vessels, project cargoes, break-bulk traffic, and dry bulk cargo in addition to Cruise vessels
- The only public berth in Sydney Harbour for commercial vessels.

PROJECT NAME: SYDNEY MARINE TERMINAL CRUISE BERTH EXPANSION PROJECT. DRAWING NO.: SYDNEY MARINE TERMINAL CRUISE BERTH EXPANSION PROJECT - OPT-D. DATE: 17 APRIL 2014. SCALE: 1:5000. DRAWING STATUS: FOR REVIEW.



Date APRIL 17/14		Scale 1:5000		Designed BB		Drawn PJG		Checked RJM		Approved		CBCL No. 142421.00		Contract	
A ISSUED FOR REVIEW No. Description		CBCL LIMITED Consulting Engineers		PORTS AUSTRALIA		SYDNEY MARINE TERMINAL				Drawing		<h1>OPT-D</h1>			
		PROPOSED CRUISE BERTH EXPANSION													